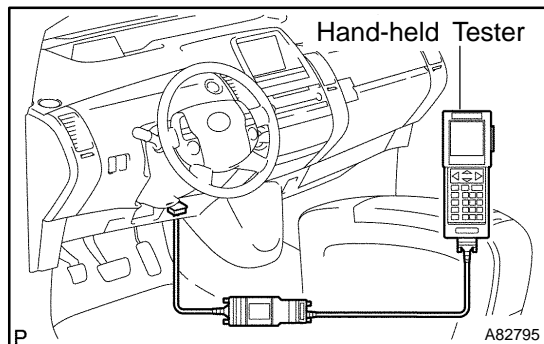


## CHECK MODE PROCEDURE



### 1. CHECK MODE (SIGNAL CHECK)

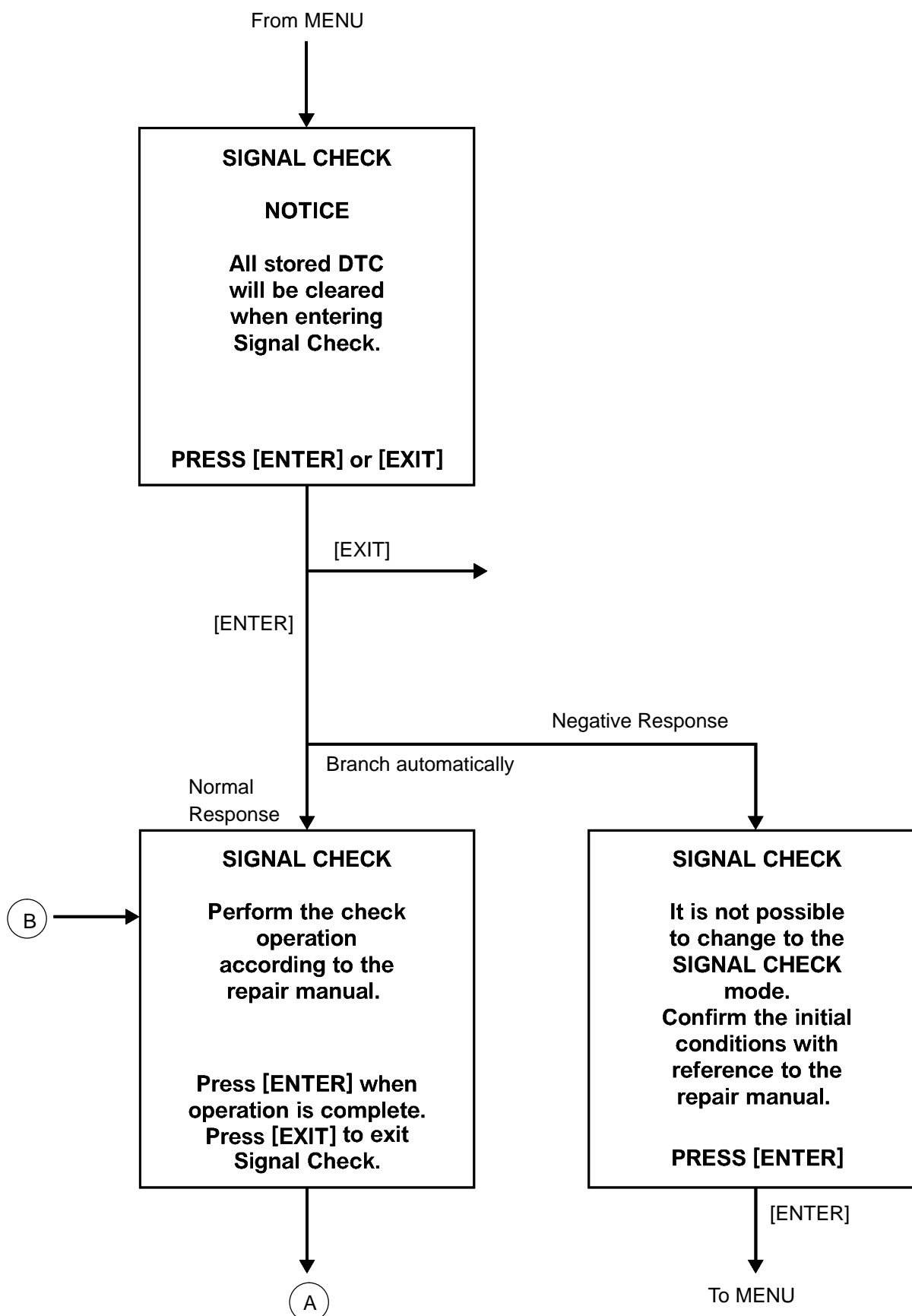
- (a) Connect the hand-held tester to the DLC3.
- (b) Turn the power switch on (IG).
- (c) Select the "SIGNAL CHECK", and proceed checking with the hand-held tester.

#### HINT:

- Malfunctions can be detected in the check mode better than the normal check mode.
- If the normal system code is output in the normal check mode even when a sensor signal malfunction is suspected, perform the inspection in the check mode.

#### [System Selection Screen]

"DIAGNOSIS" - "OBD/MOBD" - "MODEL YEAR" - "MODEL SELECTION = PRIUS" - Select the option parts - "SRS AIRBAG " - "SIGNAL CHECK"



H

H44057

